



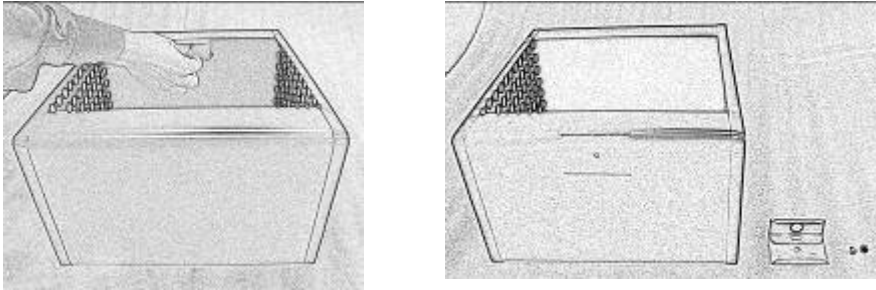
Metal Cube Storage (Red)

Instruction to Attach Optional Handle

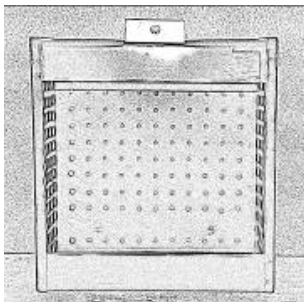
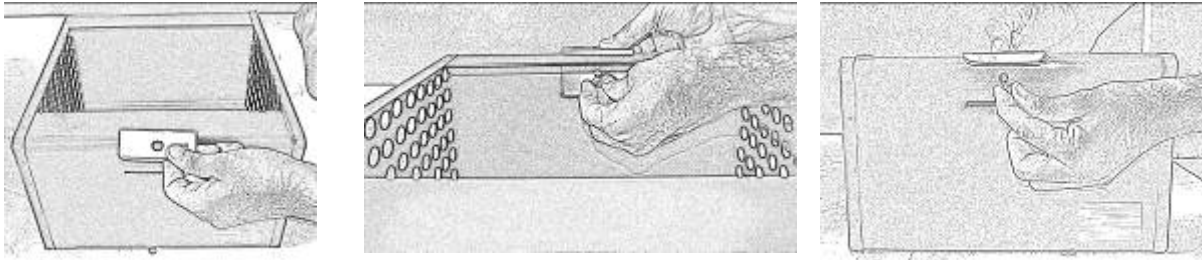
This storage box includes a decorative handle that may be shipped detached from the box, or shipped secured to the box in a "shipping" orientation (bolted to the inside of the box). If so and if you wish to attach the handle (optional) in a decorative orientation, then follow these instructions.

Parts Included: (1) Handle, (1) Nut, (1) Bolt

- 1) First, if the handle is already attached to the inside of the box, use appropriate tools (screwdriver and a pair of pliers) to remove the handle. This is illustrated below:



- 2) Now position the handle as shown below. The handle is inserted into the front slot of the box so that it projects upwards (when the box is upright). The hole in the handle should align with the hole in the box. Insert the bolt through both the box hole and the handle hole and secure the nut to the bolt. Tighten using the tools.



Care and Instructions:

- Wipe with soft, dry cloth.
- To protect the finish, do not apply household cleaners or abrasives.