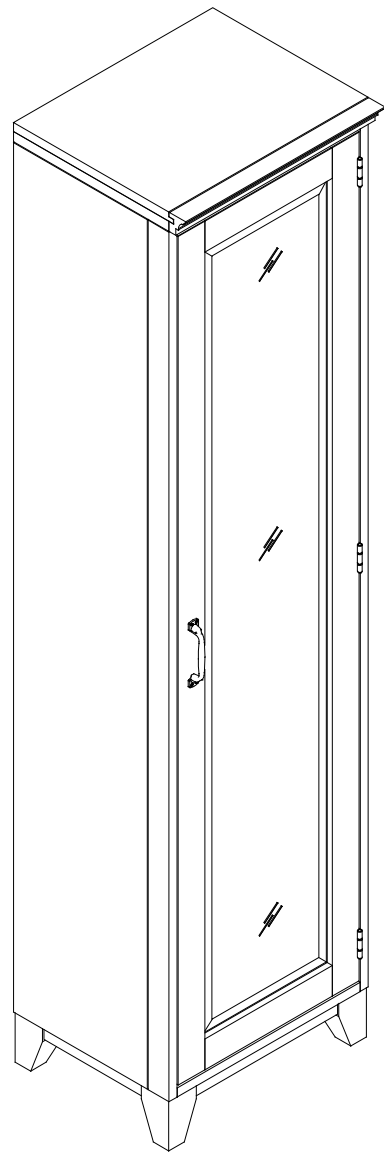
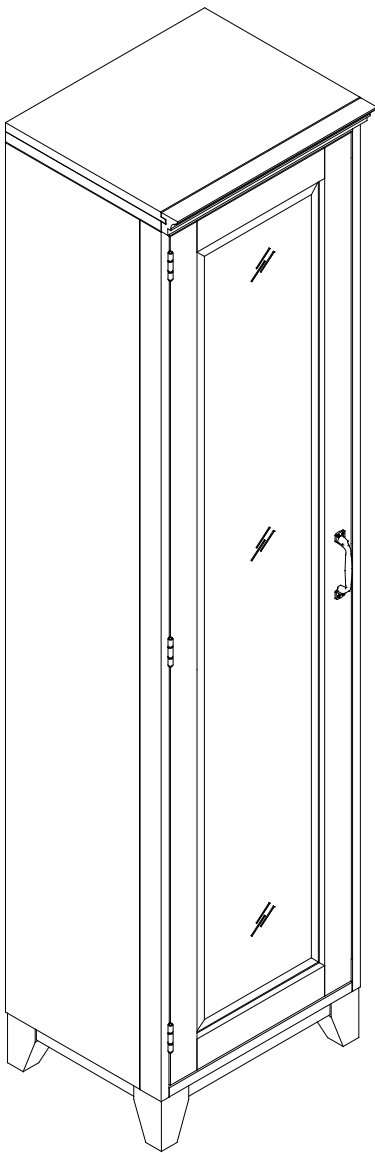




**HAMPTON VANITY TOWER WITH MIRROR**

**ASSEMBLY INSTRUCTION**



### Important Safety Instructions:

- Please read all instructions carefully before assembling.
- For your safety, assembly by two or more adults is strongly recommended.
- Keep instructions for future use.
- Use only vendor supplied hardware to assemble. Using unauthorized hardware could jeopardize the structural integrity of the item.

### Pre-assembly:

- Remove all parts and hardware from the box and lay out on a clear carpeted or scratch-free work surface, as this will avoid damaging parts during assembly. The shipping box provides an ideal work surface.
- Do not dispose of any packaging or contents of the shipping carton until assembly is completed to avoid accidentally discarding small parts or hardware.
- Use the parts and hardware lists below to identify and separate each of the pieces included.
- The illustrations provided allow for easier assembly when used in conjunction with the assembly instructions.
- The use of power tools to aid in assembly is not recommended. Power tools can damage hardware and split wood.

### Assembly Instruction Steps:

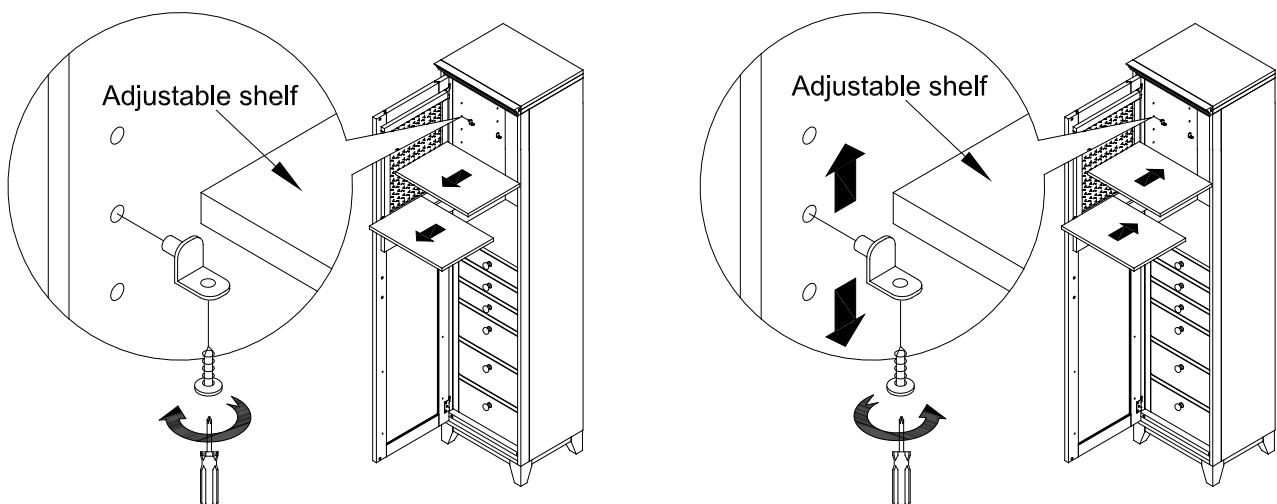
#### Option I:

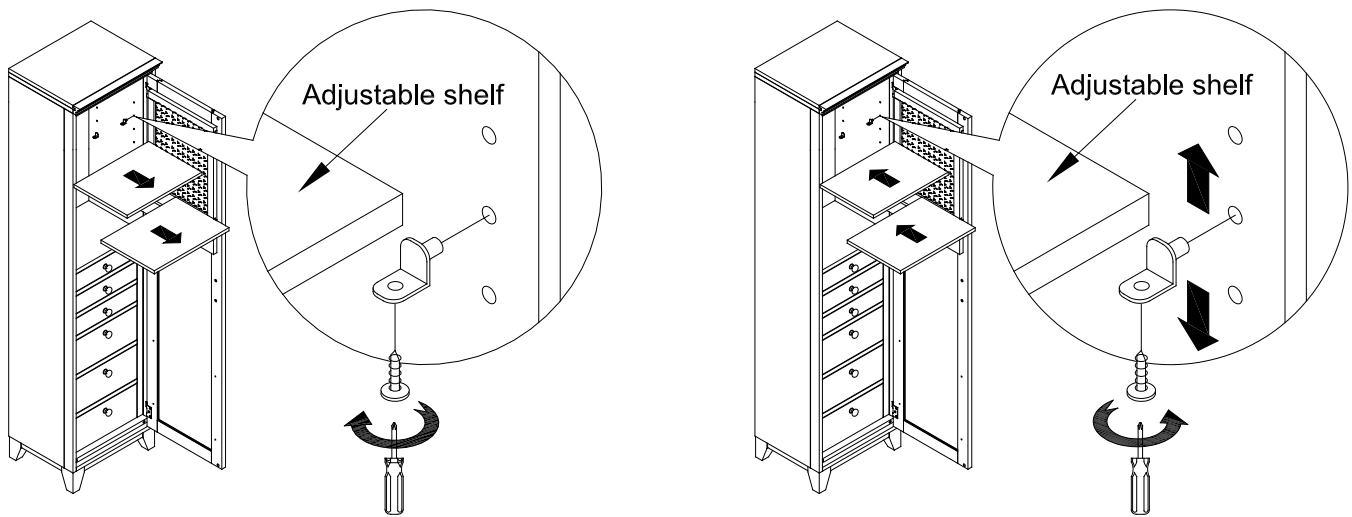
You can use this vanity tower (Left or Right) as is, after removing all packing materials.

#### Option II:

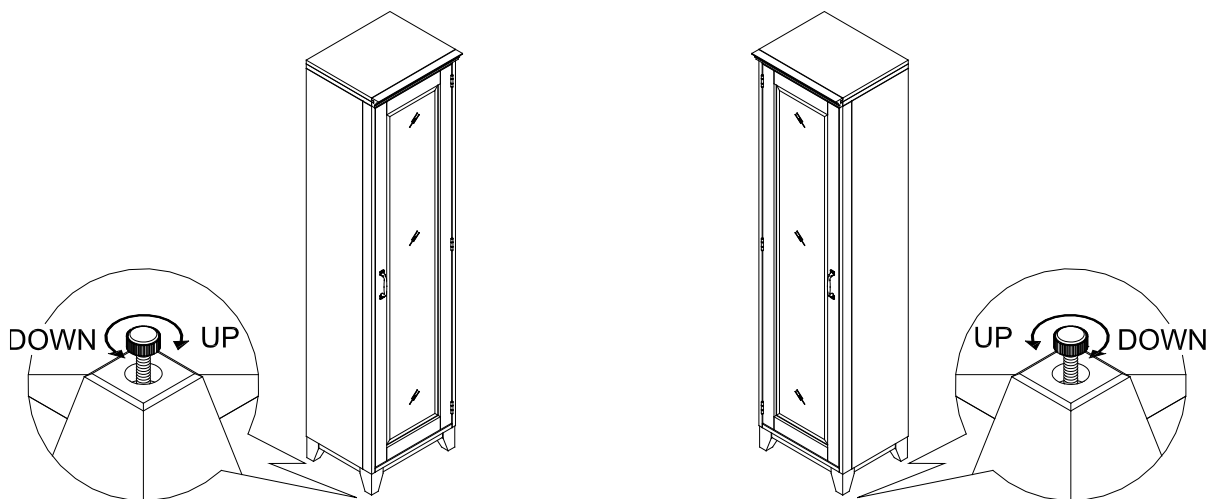
You can adjust pre-assembled shelves using these steps below:

1. Before removing the shelves, unscrew and remove the screws, which are attached to shelf pegs underneath the shelves, with a Phillips Head Screwdriver.
2. Determine desired height for shelves using corresponding peg holes located on the interior of the tower.
3. Insert shelf pegs into the pre-drilled holes until fully secure. Place shelves onto shelf pegs, making sure shelves are stable. Reinsert and tighten screws back into the shelves by inserting the screws through pre-drilled holes of the shelf pegs into underside of the shelf. See illustration below.





4. Adjust recessed levelers located at the bottom of legs to keep the tower level.
5. Hardware should be checked periodically for tightness.



**Care Instructions:**

- Dust often using a clean, soft, dry and lint-free cloth.
- Blot spills immediately and wipe with a clean, damp, cloth.
- We do not recommend the use of chemical cleansers, abrasives or furniture polish on our lacquered finish.
- Hardware may loosen over time. Periodically check to make sure all connections are tight. Re-tighten if necessary.



## FURNITURE TIPPING RESTRAINT

**WARNING:** This product is only a deterrent. It is not a substitute for proper adult supervision. Manufacturer assumes no liability for improper installation or excessive loads placed on screws, brackets or straps.

Young children may be injured by tipping furniture and the use of a tipping restraint is highly recommended.

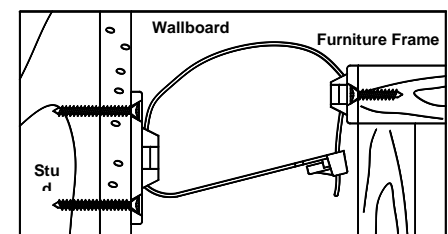
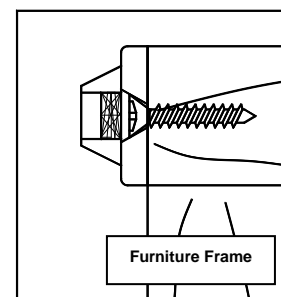
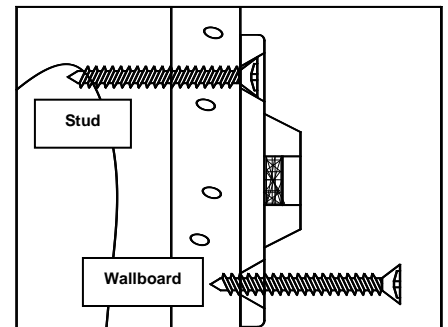
When properly installed, this restraint could provide protection against the unexpected tipping of furniture. We recommend mounting this restraint to a wall stud.

Hardware included:

- (2) Brackets 48 x 21 x 10mm
- (1) Nylon Strap 300 x 12 x 8mm
- (2) Stud Mounting Screws 6 x 32mm
- (2) Product Side Mounting Screws 6 x 19mm

Note: For safe mounting it is essential to use the proper hardware for your wall type. The included hardware is for drywall or stud mounting only. For other wall types (ie: plaster, concrete, brick...) please consult your local hardware store.

1. Determine the final resting position of the furniture piece. Mark location on the wall approximately 1" below the top of the back of the furniture. Mark and drill pilot hole into the center of the stud with a 3/32" drill bit. Attach a bracket to the stud with the long screws provided.
2. On the back of the furniture, a bracket will need to be attached to the furniture frame at the top. To do this, temporarily move the furniture into its final position and mark the location of the wall bracket on the furniture frame.
3. Move the furniture away from the wall and place a bracket on the mark. Mark and drill holes for screws with a 3/32" drill bit. Attach the bracket to the furniture with the short screws provided.
4. Check to be sure the wall bracket is firmly screwed into wall stud and the furniture bracket is firmly attached to the frame.
5. Move the piece of furniture into its final position so that the wall bracket and furniture bracket are in alignment.
6. Thread the strap through brackets and tighten until snug. Do not over-tighten.
7. Check to make sure the brackets are firmly installed and the strap is secure.



Completed Anti-tip Kit Installation