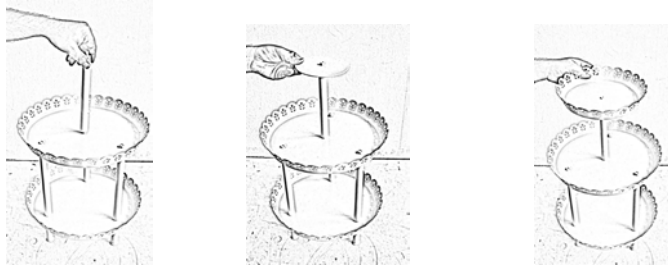


Parts Included

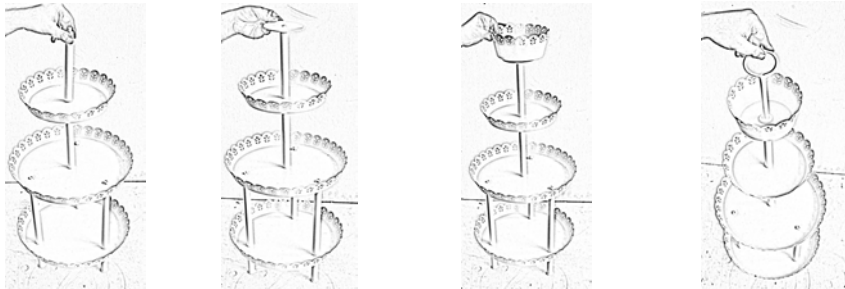
- (1) 2 Tier Stand
- (2) Basket Large & Small
- (2) Plate Large & Small
- (3) Rod Marked A, B & C

Step 1-

Pick up the marked A rod & insert into 2 tier stand stud and thread clockwise , after being this insert large plate into the marked A rod stud & now insert the large basket into the marked A rod stud as per below illustration.

**Step 2-**

Pick up the marked B rod & insert into the marked A rod stud and thread clockwise , after being this insert small plate into the marked B rod stud & now insert the small basket into the marked B rod stud, now insert the marked C rod into the marked B rod stud and thread clockwise as per below illustration.

**Care and Instructions:**

- Wipe with soft, dry cloth.
- To protect the finish, do not apply household cleaners or abrasives.

