

# Pottery Barn Teen Foosball Table



Manufactured by:

American Heritage Billiards:

(330) 626-3938

Assembly, Instructions and Rules

**Congratulations!** We are sure that you will create a lifetime of wonderful memories with your new Teen Foosball Table!

PLEASE KEEP YOUR INSTRUCTIONS!

- Please read through this Instruction Manual to familiarize yourself with all the parts and assembly steps.

TOOLS REQUIRED FOR ASSEMBLY:

- **DO NOT** use a Power Drill for any Assembly
- Phillips Screwdriver (not included)
- 9/16" Socket Wrench (not included)

Parts List

- Four Cabinet Legs
- One Cabinet
- Two Wood Scorer Units
- Playfield Trim

Hardware Parts List

- Eight – Bolts to Attach Cabinet Legs to Cabinet
- Eight – Flat Washers to Attach Cabinet Legs to Cabinet
- Two – 1 ¼" Screws

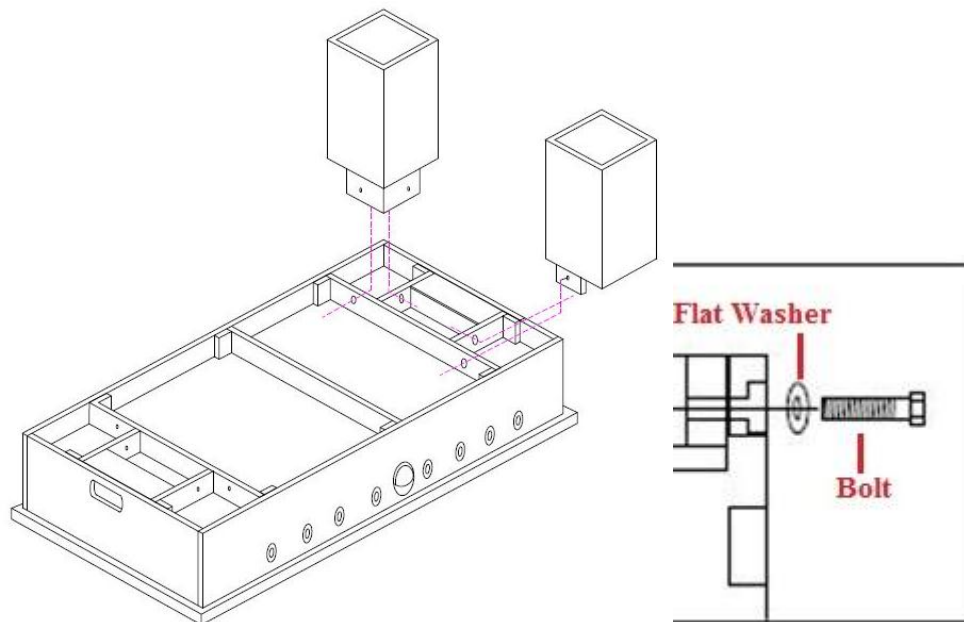
## ASSEMBLY INSTRUCTIONS:

We recommend that two adults work together to assemble this table.

- *The table **MUST** be assembled upside down.*
- *This is a very heavy table and turning it right side up it will require two capable adults.*
- ***DO NOT** set any weight on the Metal Rods*
- *We suggest that you use the bottom carton as a clean flat work area to protect the top of your foosball table while assembling.*

### Step 1: Cabinet Leg Assembly

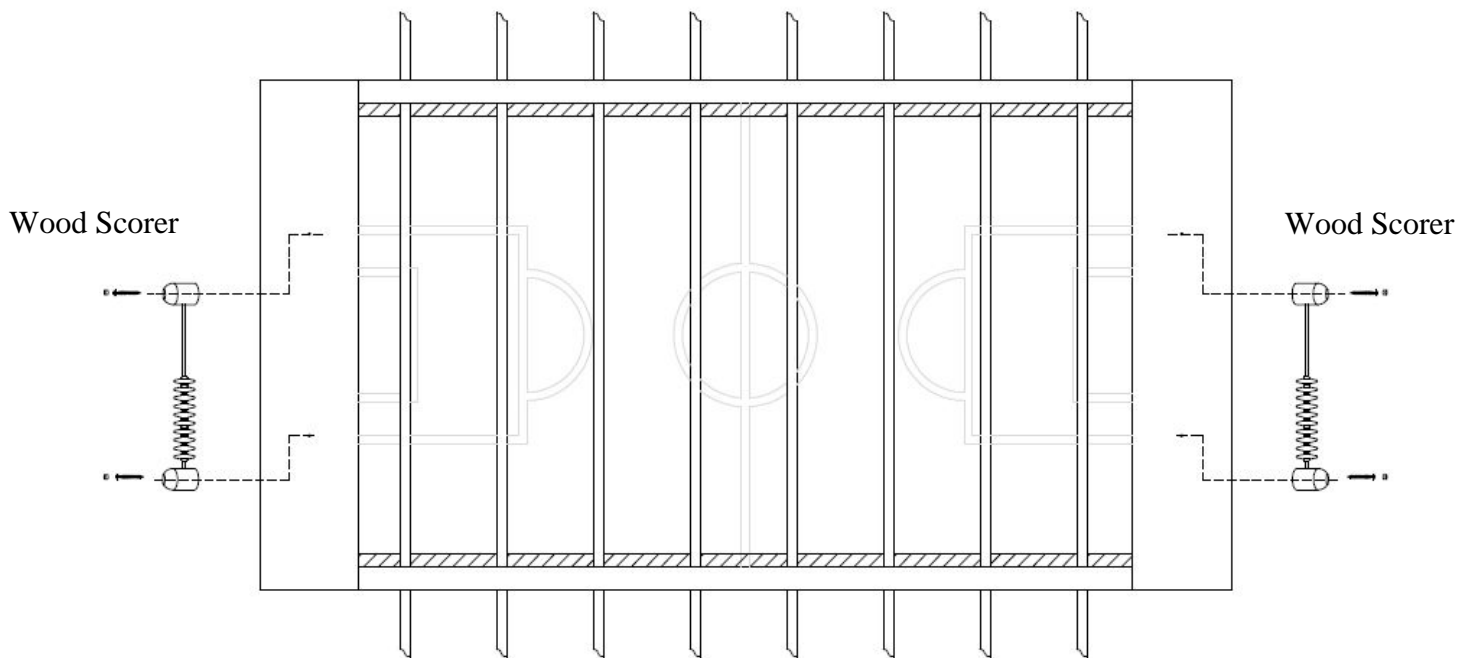
- Use a 9/16” Socket Wrench to attach the Cabinet Legs to the Cabinet using two Bolts and two Flat Washers for each Cabinet Leg. Make sure to tighten each leg securely.



**LIFT TABLE WITH TWO ADULTS AND SET TABLE ON ITS LEGS**

## Step 2: Wood Scorer Attachment

- **DO NOT** use a Power Drill to attach the Wood Scorer to the Cabinet
- Line the Wood Scorers up with the predrilled holes in the top of the Cabinet
- Using a Phillips Screw Driver, attach each Wood Scorer to the Cabinet using two 1¼” screws for each Wood Scorer



## Step 3: Leveling the Table

- Adjust the Leg Levelers on the underside of each Cabinet Leg accordingly so that the table is level.

# PLAY INSTRUCTIONS

NOTE: THE BALL MAY BE EJECTED FROM THE PLAYFIELD DURING PLAY.

## GAME RULES:

1. To start play, flip a coin to see which team or player will serve first.  
To begin, serve the ball through the side entry cup.
2. Pass and score by pushing and pulling rods and twisting grips.  
Spinning the rods is considered illegal in tournament play. If playing as teams (more than two players total), once the ball is served, players may not change position on the rods until: one team scores; a team requests a timeout (maximum 2 per game); the ball must be served again; or between games.
3. A point is scored when the ball enters the goal. A serve, by the team last scored upon, follows each goal. Teams change table sides after each game.
4. Intentional jarring or tipping of table during play is illegal, and reaching into the playing area during play is illegal (except for a dead ball).

5. A ball is considered a DEAD BALL when it has completely stopped its motion or is unreachable by any player. If a ball stops between the goal and the two-man rod, then it is put back into play by placing it in the corner that is nearest the dead ball spot. If the ball completely stops anywhere else on the playfield between both two-man rods, it is put back into play with a serve by the team that originally served the ball.
6. If a ball leaves the playing area during play (other than through the goals), the ball is considered OUT OF PLAY. The ball is returned to play with a serve by the team which originally served the ball.
7. This game is meant to be played with either two or four players. We recommend that all others should stand clear of the Table Playing Area if they are not playing.